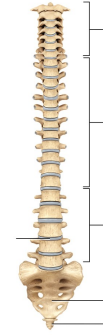


# Vertebral column



Copyright © John Wiley & Sons, Inc. All rights reserved.

# Sternum



Mark Nielsen

# Scapula



Copyright © John Wiley & Sons, Inc. All rights reserved.

# Pelvis (male)



Mark Nielsen

# Femur



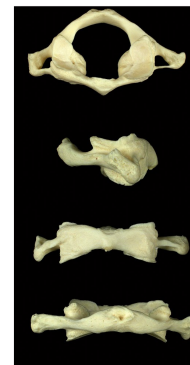
# Mandible



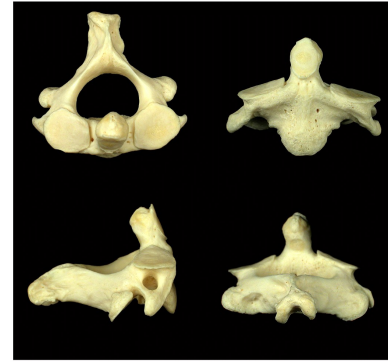
# Hyoid



# Atlas (C-1)



# Axis (C-2)



# Sacrum and Coccyx



# Ribs (left)



# Femur (left)



Tibia  
(left)



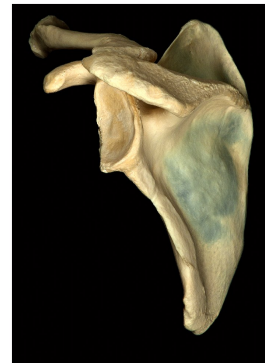
Fibula  
(left)



Patella



Scapula  
(left)



# Clavicle



# Humerus (left)



# Ulna (left)



# Radius



# Skull



Mark Nielsen

# Hand



Mark Nielsen

# Bones of Cranium (superior)



Bones of the cranium disarticulated

Mark Nielsen

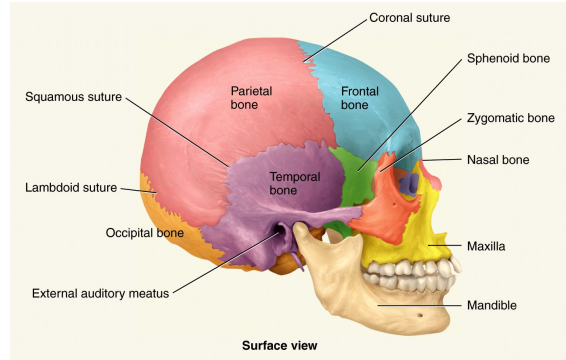
# Bones of Cranium (lateral)



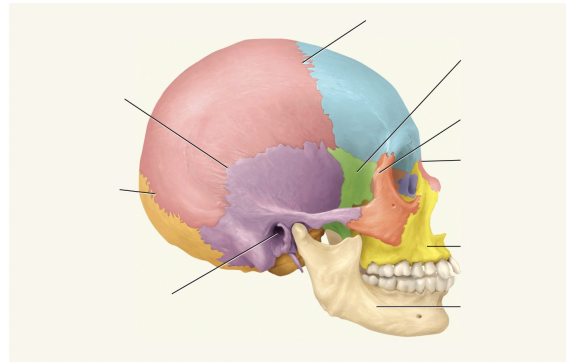
Bones of the cranium disarticulated

Mark Nielsen

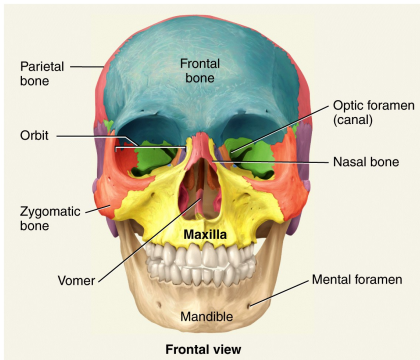
# Skull (labeled, lateral)



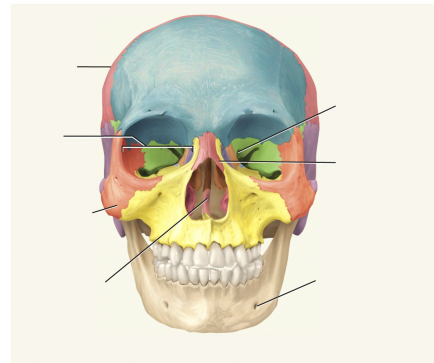
# Skull (unlabeled, lateral)



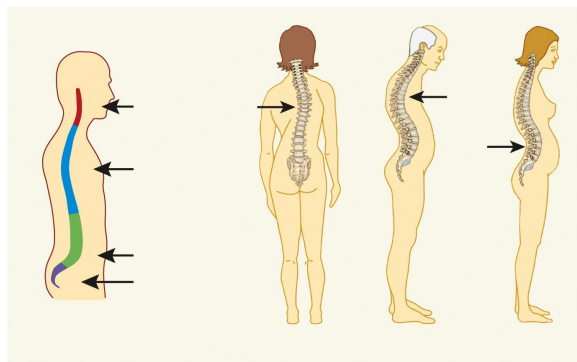
# Skull (labeled, anterior)



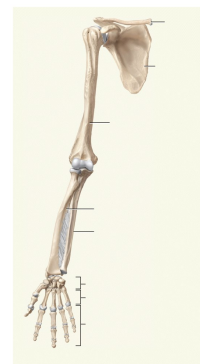
# Skull (unlabeled, anterior)



# Curves of the Spine



# Upper Limb (unlabeled)



# Upper limb (labeled)

